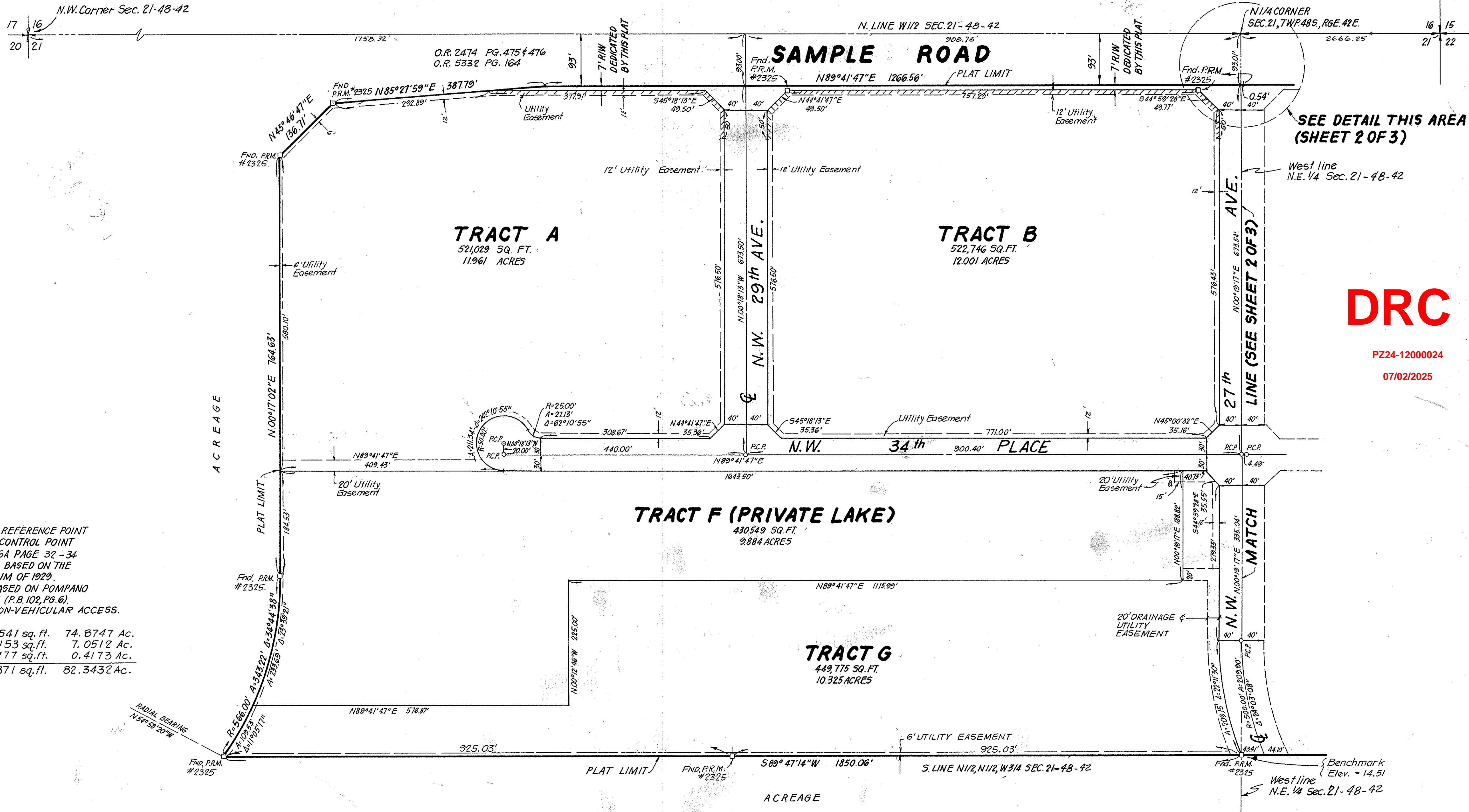
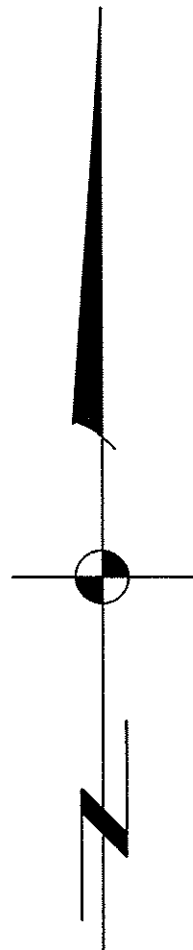
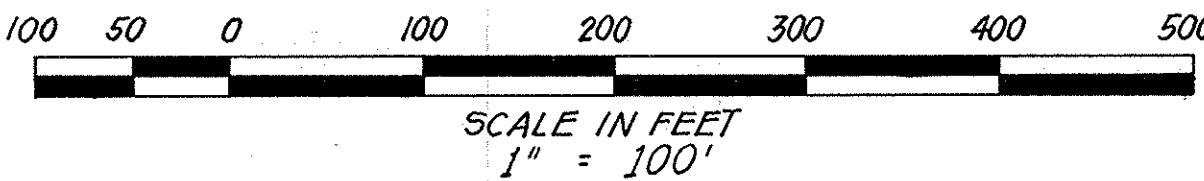


PREPARED BY:  
**KEITH AND SCHNARS, P.A.**  
ENGINEERS · PLANNERS · SURVEYORS  
1115 N. E. 4TH AVENUE  
FORT LAUDERDALE, FLORIDA

# POMPANO INDUSTRIAL PARK THIRD ADDITION

A PARCEL OF LAND IN SECTION 21, TOWNSHIP 48 SOUTH, RANGE 42 EAST  
BROWARD COUNTY, FLORIDA



## SURVEY NOTES:

1.  $\square$  PRM. INDICATES PERMANENT REFERENCE POINT
2.  $\circ$  PCP. INDICATES PERMANENT CONTROL POINT
3. SURVEY DATA IN FIELD BOOK 206A PAGE 32-34
4. ELEVATIONS SHOWN HEREON ARE BASED ON THE NATIONAL GEODETIC VERTICAL DATUM OF 1929.
5. BEARINGS SHOWN HEREON ARE BASED ON POMPANO INDUSTRIAL PARK FIRST ADDITION (P.B. 102, PG. 6)
6.  $\text{-----}$  INDICATES LINE OF NON-VEHICULAR ACCESS.
7. AREA TABULATION:

Tracts A thru G	3,261,541 sq. ft.	74.8747 Ac.
Internal R/W	307,153 sq. ft.	7.0512 Ac.
T/R/W Sample Rd.	18,177 sq. ft.	0.4173 Ac.
<b>TOTAL</b>	<b>3,586,871 sq. ft.</b>	<b>82.3432 Ac.</b>

DRC

PZ24-12000024  
07/02/2025

DRC